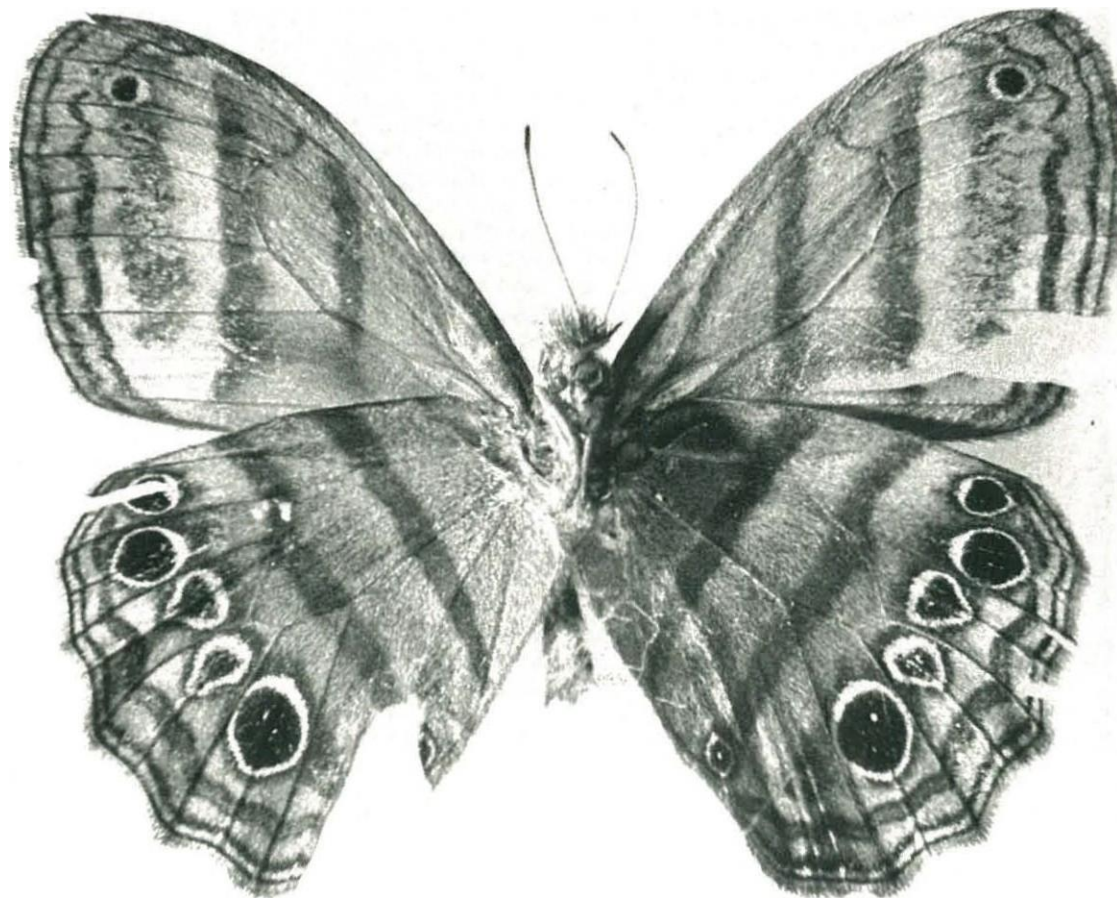


Magneptychia libye
upper side.



Magneptychia libye
lower side.



A NEW BUTTERFLY RECORD FOR TRINIDAD & TOBAGO

By F.C. Urich

Sans Souci Estate, Sangre Grande.

AT about 9.30 a.m. at my "Sans Souci" estate in the Sangre Grande area, I netted a Satyrid, which on examination proved to be a butterfly that I had never seen before. From the two dirty yellowish oval spots, one on each side of the forewing, near the outer margin and roughly midway between the apex and tornus, I immediately realised that this was without any doubt, a new record for Trinidad and Tobago.

A colour photograph of this butterfly may be found in H.L. Lewis's book on butterflies of the World, Page 60 Specimen No. 2. The name of this Satyrid is: *Magneptychia libye*.

DESCRIPTION (see figures)

This butterfly is dark brown in colour, about 51h c.m. across from forewing tip to forewing tip, with wings spread flat and 33/t c.m. from apex of forewing to the tornus of the lower wing. Equally placed at about 4mm from the costa, apex, and outer margin of the forewing is a small black dot, about the size of a fullstop. Leading away and downwards running close to the outer margin of the forewing, is an irregular black marking, quite thin, and ending off at the tornus of the forewing. This marking is difficult to observe, as it is on a drab brown background; nevertheless it is present. At about 8 mm from the apex and 3 mm from the outer margin of the forewing is a dirty yellowish slightly oval spot on each forewing, about 2 mm across the greatest diameter of the oval, which runs sideways. Along the

irregular outer margin of the bottom wing and paralleling it is a thin black line. Inside of this line is another such line, running parallel to the first, and following the irregular scollops of the margin of the wing. These two black lines are more or less 1h mm apart. Paralleling this pair of black lines, and about 2mm further inside, is a single black line, conforming to the scollops of the double line and ending off at the tornus of the lower wing. This is about 1mm in thickness.

The underside of this butterfly seems to be different from all others of the same family with two thick diagonal reddish lines on a greyish brown background. There is at the apex of the forewing one eyelet on each top wing placed exactly under the two dots of black that were described as being present at the apex of the top wing, on the upper side. This eyelet is 1mm across and encircled by a drab yellowish ring. Leading downwards from this, is a thick reddish brown marking, which stops at about 4mm before reaching the tornus of the forewing. At the bottom of this is a creamish coloured blotch which extends all the way to the tornus. On the bottom wing arranged in an arc, and about 4 mm from the outer margin, are 5 eyelets, all of which are ringed by a circle of golden brown, with all the centres of a velvety black colour. Also near the inner margin of the lower wing, where the outermost diagonal marking ends, is a small eyelet close to the inner margin of the wing itself. This eyelet has a silver blue small dot in the centre. Of the five ringlets on the lower wing, only the bottommost one has one or two silvery blue dots in the centre. All the others, including the small one at the apex of the forewing, are devoid of the silvery dots.